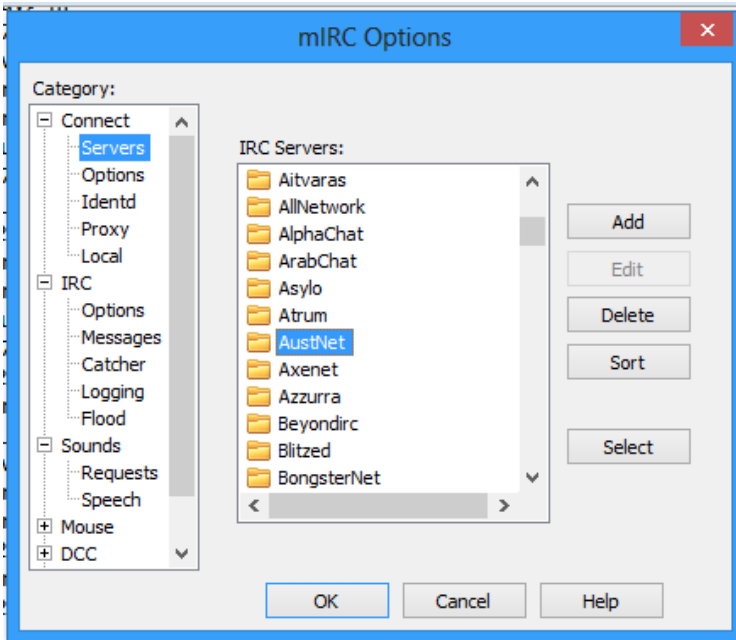
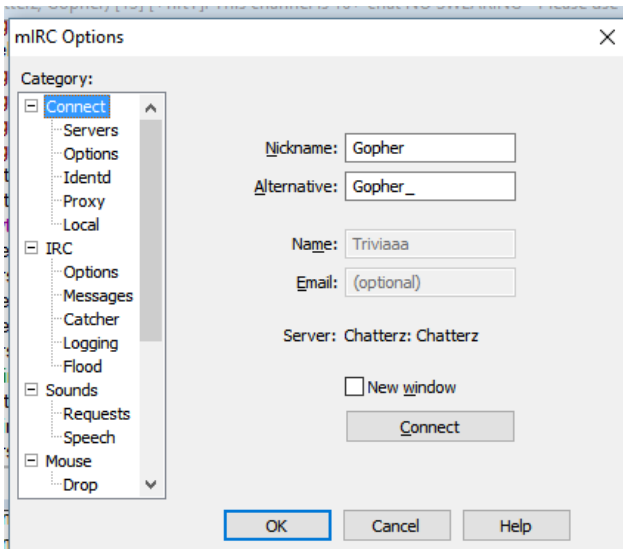


## mIRC Instructions

To select a server to join, open options - Alt+e



Click the server required (or to add another read further down for that) then click select



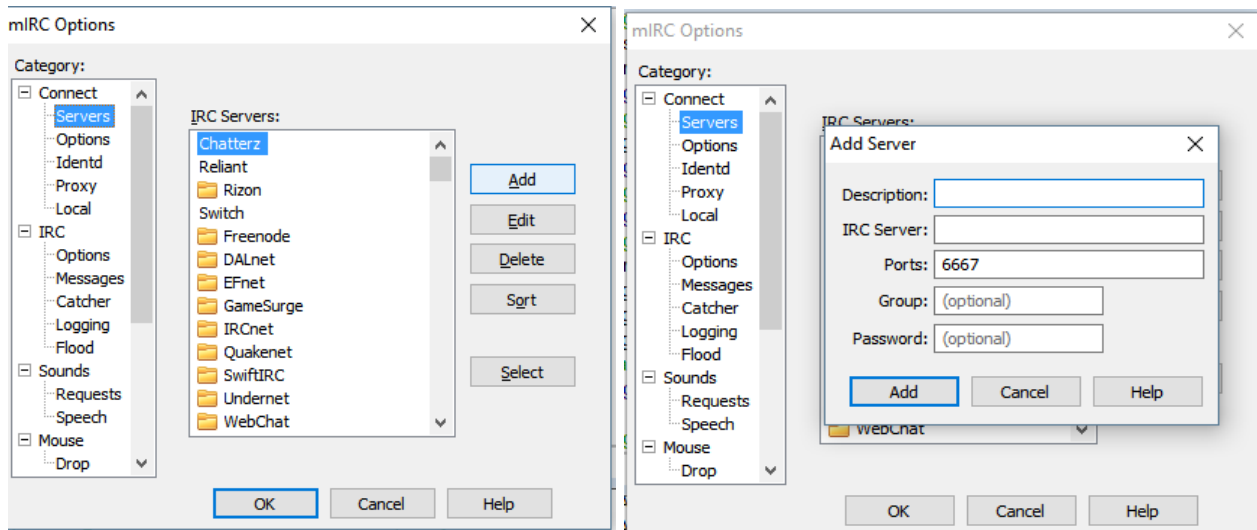
*If you want to remain on one server while logging on to another, click 'New Window' just above connect and it will open another server window. You don't need to do this but to join 2+ servers at once that's how*

*Please note: Name. It's best not to use your real name. And Email is best left blank.*

*And if you have different nicknames for different servers be sure to change to the nickname required.*

Once you have selected the server you wish to join, and Nickname is correct. Click Connect

To ADD a server, ... Click add....



Description: What you want to call the server - Chatterz. For example.

IRC server: irc.chatterz.co.uk

Port: is most commonly 6667 so no need to adjust.

Group: not needed.

Option: not needed.

*Note - Make sure all punctuation is correct in the server address.*

Then click Add.

It will now show in the list of servers. (usually at the bottom until you've joined it)

To enter password for chatterz it's best to type this in the status channel  
(incase a command fails and it's revealed to the channel)

Type /pass passwordhere

Once connected type '/list' To show all channels/rooms. Or if you already know the name of where you wish to join type /j #channelname

Hope this is simple enough to understand ask if u need help xx